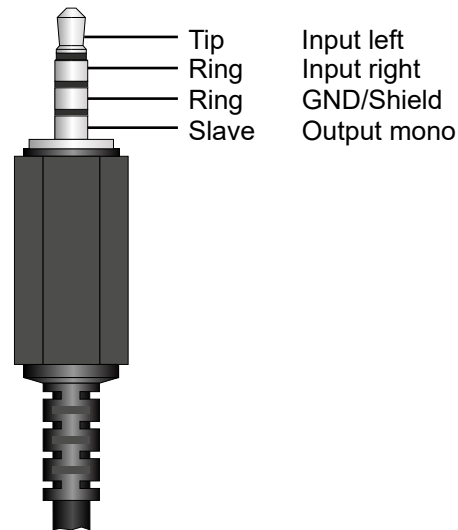
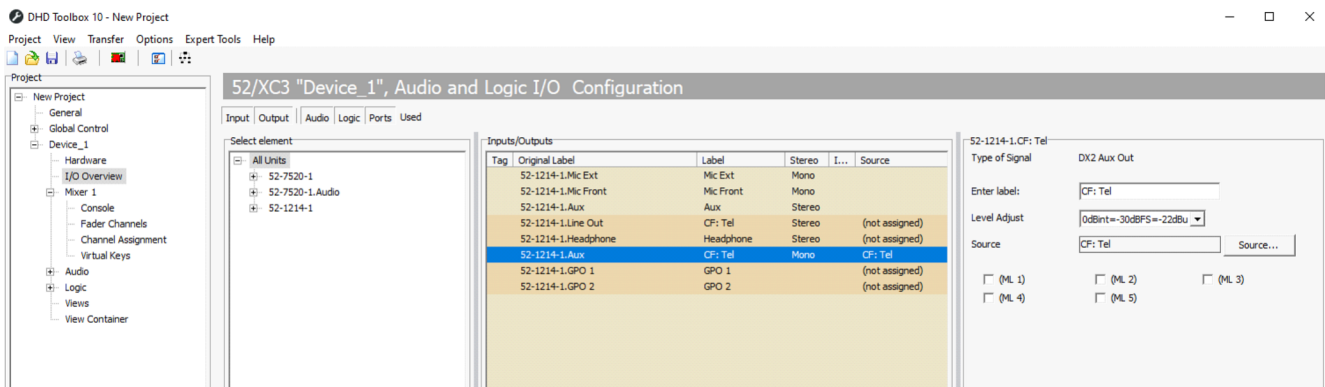


3.5 mm TRRS Connector at 52-1214 and 52-1256



Note: For connection to Mic or Headset inputs: adjust headroom in Toolbox between "0dBint=-22dBFS=-14dBu" and "0dBint=-30dBFS=-22dBu" for low output level to avoid distortions caused by input overload.



Specifications and design are subject to change without notice.
The content of this document is for information only.
The information presented in this document does not form part of any quotation or contract, is believed to be accurate and reliable and may be changed without notice. No liability will be accepted by the publisher for any consequence of its use. Publication thereof does neither convey nor imply any license under patent- or other industrial or intellectual property rights.